

# GUARDIAN

CAMPERS & RV CENTRE

**SUV** CARAVANS  
*...where tomorrow starts today!*

**SUV** CAMPERS  
*...where tomorrow starts today!*

**SUV** HYBRID CARAVANS  
*...where tomorrow starts today!*

## SUV ISLAND CARAVANS



Guardian Campers is one of the largest suppliers of SUV Campers, Caravans and Hybrids in

*Australia!*

*Let YOUR Adventure Begin...*

# SUV TALISMAN ISLAND 13 PLUS

13'6" FOOT

2 BERTH



**SUV CARAVANS**  
...where tomorrow starts today!

## INCLUSIONS

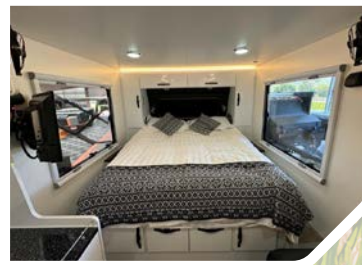
- Australian engineer approved chassis and drawbar
- Australian engineer approved safety chain and attachment
- Australian engineer approved series 4 recovery suspension with galvanised swing arms
- Electric steps
- Electric rollout awning
- Electric lift roof with manual override
- Reverse cycle Air Conditioning
- 2x Water tanks totalling 200L of water
- 1x Grey water tank 80L
- Innerspring mattress latex
- Swing entry door with midge protection screen
- Internal lounge with removeable table
- Internal storage drawers and cupboards at foot of bed
- Hanging cupboards
- 4 Burner gas stoves (AGA) with wind guard
- Hot and cold water plumbed to kitchen sink tap
- 90-degree swing around kitchen with support leg and cutlery drawer
- Pantry slide to suit 95L trakmate fridge
- Stainless steel folding benches interconnecting pantry slide and kitchen
- 240V external outlet in kitchen area
- 200W solar panels roof mounted
- Midge screen windows
- Internal LED lights including reading lamps
- External LED lights yellow/white for insects
- Internal 240V & 12V power options
- Breakaway fitted
- 16" alloy rims
- Rain shower, soap and shampoo dispensers
- 265/75R16 tyres
- 2x Jerry can holders
- 2x 4kg gas bottle storage
- 12" Electric brakes
- 200amp batteries
- Fire extinguisher
- Alko hitch to suit 50mm ball
- Integrated gas hot water
- Electric jockey wheel
- Stereo with internal and external speakers
- 1x Spare wheel
- Internal toilet and shower
- Flush cartridge toilet
- Storage in ensuite
- External storage compartments
- Positive pressure system
- Solar regulator D/C to DC charger
- Lino floor covering
- Bolt on stub axle (spare) for recovery suspension
- Fully enclosable annex
- 20amp battery charger

## OPTIONAL EXTRAS

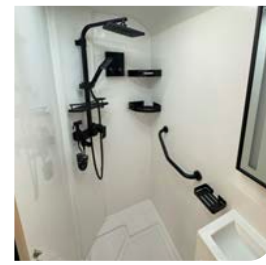
- 12V TV
- 95L fridge/freezer
- SUV mat
- Caravan starter kit
- 12V sirrocco style fans



Island Bed



Internal Extra-Large Ensuite



Internal Lounge and Fridge



DISCLAIMER: Photos are for illustrative purposes only & may include items that are optional extras. Features and options may vary. ATM, TARE, Ball Weight, Payload & all measurements are approximate only and varies with each configuration. Prices correct as of January 2024. Prices inclusions and Free items are subject to change without notification.

# UPGRADES AVAILABLE

**ENCLOSABLE ANNEX**  
Including Walls, Skirt, Floor and Anti-Flappers  
Valued at **\$2,500**

**DIESEL HEATER**  
Valued at **\$1,500**

**12V SIRROCCO STYLE FANS**  
Supplied and Installed  
Valued at **\$450**



SCAN ME TO VISIT WEBSITE

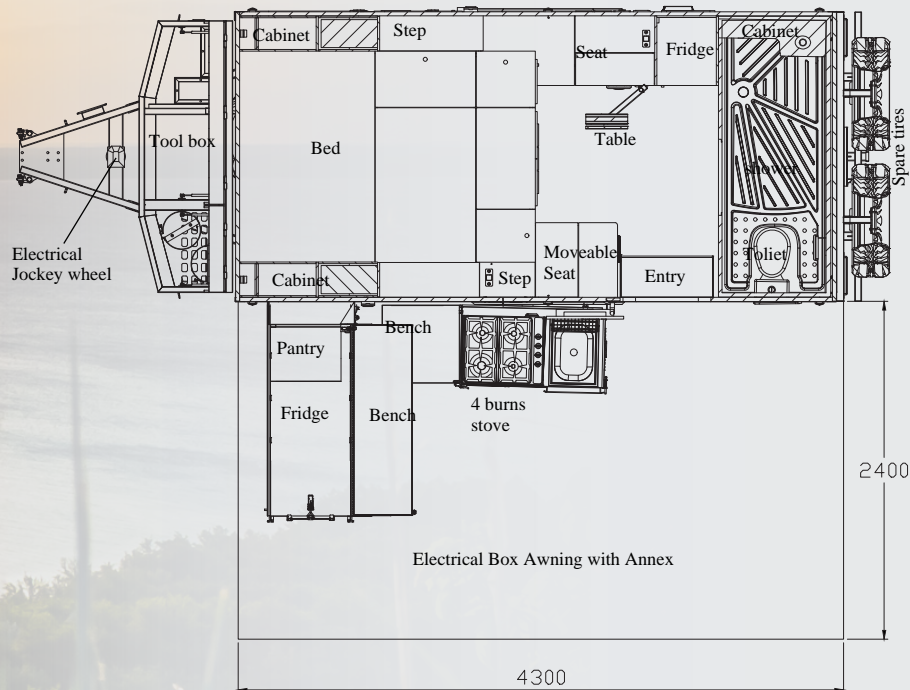


ATM 2,500KG  
TARE 2,120KG  
GTM 2,320KG

Trailer Carrying Capacity 380KG

Fridge Dimensions (Approx)  
W:560mm | D:960mm  
H:520mm

CH:2,748mm  
OH:3,140mm  
L:6,176mm  
W:2,058mm



External Storage Compartments



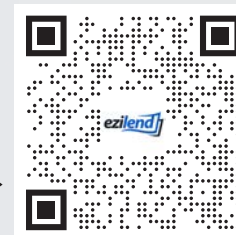
External Swing Around Kitchen



External Pantry Slide with Fridge



**PERSONALISE YOUR DEAL TODAY!**



# OUR RANGE

Pick Your Adventure

**SUV CAMPERS**  
...where tomorrow starts today!

**SUV HYBRID CARAVANS**  
...where tomorrow starts today!

**SUV CARAVANS**  
...where tomorrow starts today!

SUV TELE-TRACK



SUV TELE-TRACK *Slideout*



SUV NAVIGATOR F1 *Family*



SUV TALISMAN ISLAND 13PLUS



SUV TALISMAN ISLAND 14



GR 14



SUV GT MEGA



SUV GT MEGA *Slideout*



SUV TALISMAN 13PLUS



SUV TALISMAN ISLAND 16



SUV TALISMAN ISLAND 16 *Family*



GR 16



SUV GRAND MEGA



SUV GRAND MEGA *Slideout*



SUV TALISMAN 15



SUV TALISMAN ISLAND 19.8



SUV TALISMAN ISLAND 19.8 *Family*



GR 17.6



TUFF TRADESMAN ELITE TRAILER



SUV TALISMAN 16 *Family*



Find a Guardian Near You...

**ROCKHAMPTON**

Open  
Mon-Fri 8am to 4pm  
Sat 9am to 12pm (Sales Only)

873-887 Yaamba Road (Bruce Highway),  
Parkhurst Q 4702

**CABOOLTURE**

Open  
Mon-Fri 8am to 4pm  
Sat 9am to 12pm (Sales Only)

109 Old Toorbul Point Rd (M1 Highway),  
Caboolture Q 4510

**GUARDIAN**

CAMPERS & RV CENTRE

@GuardianCampersRVCentre

0488 032 792 | (07) 4936 2685

www.gcrv.com.au